

# C JAMES & CO - TOOTING

SALES AND LETTINGS SPECIALISTS



**22 Woodbury Street, London, SW17 9RR**

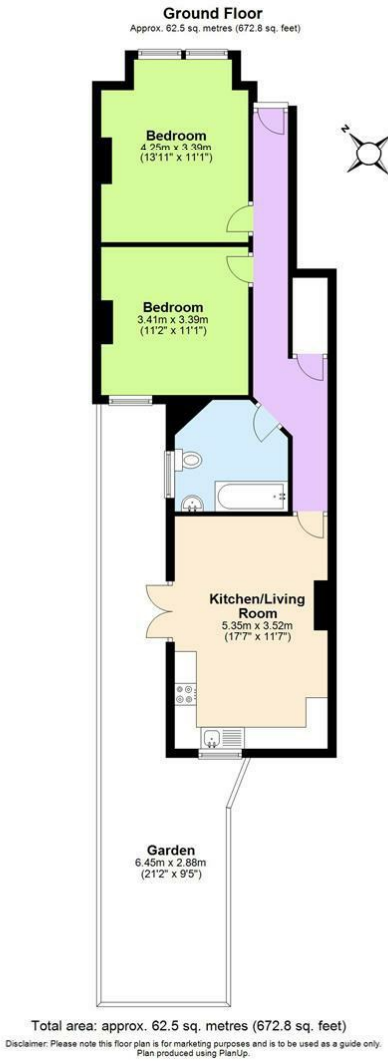
**£2,100**

A really lovely two bedroom, ground floor conversion flat with own rear garden. A grey shaker style kitchen/open living space with feature fire place and doors leading onto the garden and a modern bathroom. This property is in excellent condition! Located close to the high street/Tooting Broadway Tube. Comes unfurnished. Available from February 2024

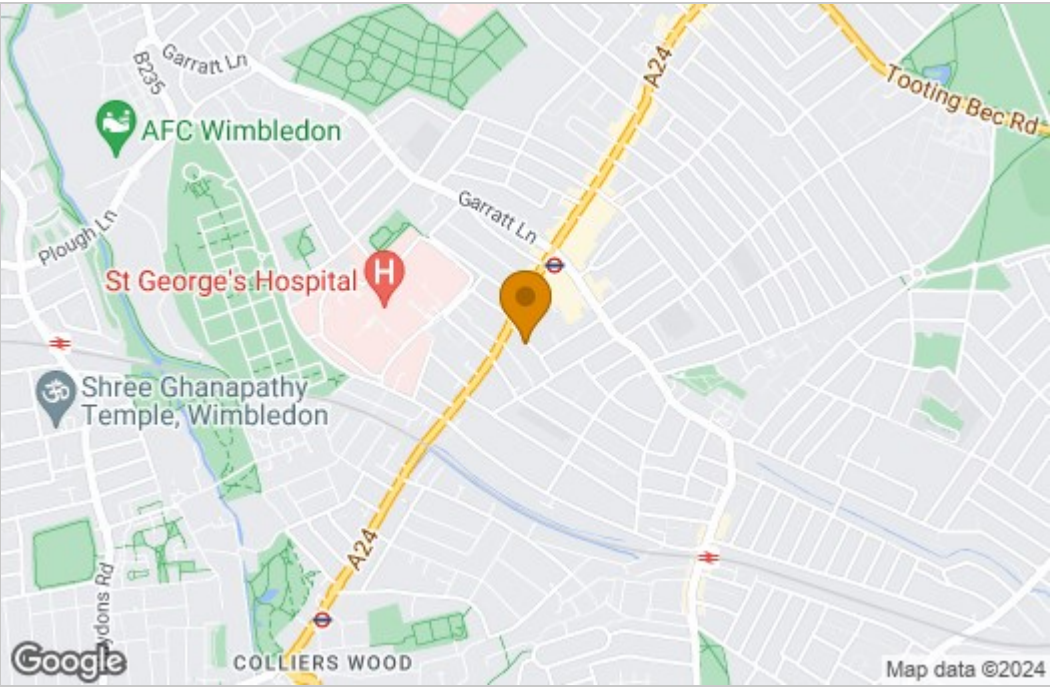
London Borough of Wandsworth, Council tax band C/£812.57pa



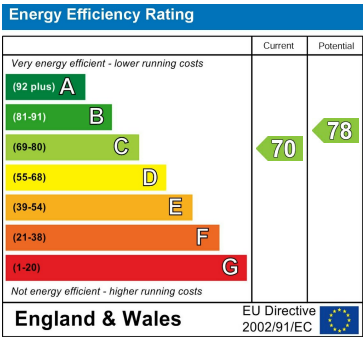
Floor Plan



Area Map



Energy Efficiency Graph



These particulars, whilst believed to be accurate are set out as a general outline only for guidance and do not constitute any part of an offer or contract. Intending purchasers should not rely on them as statements of representation of fact, but must satisfy themselves by inspection or otherwise as to their accuracy. No person in this firms employment has the authority to make or give any representation or warranty in respect of the property.